

Wear Resistant Equipment

Wear Resistant Equipment and Application

RULA uses a number of different types of wear resistant materials which cover a wide range of plant equipment and applications. The aim is to reduce wear of plant equipment at critical areas at a minimum cost.

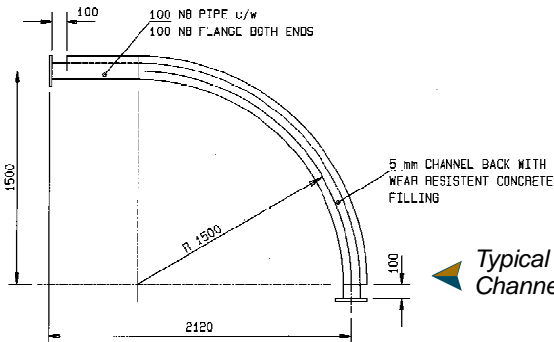
Typical applications can be found in the conveying of fly ash, coarse ash (bottom ash from the boiler), wet ash, lime and cement. Other applications are discharge chutes of coal and other bulk materials.

Wear resistant equipment:

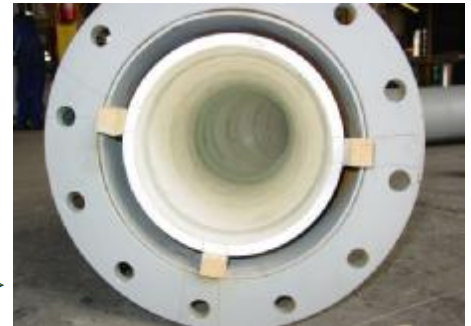
RULA have developed:

- Wear resistant channel back long radius bends
- Wear resistant long radius lobster bends with ceramic cylinders
- Y-pieces / pots lined with ceramic cylinders
- Discharge chutes lined with ceramic tiles, glass tiles and UHMWPE sheeting
- Thick wear resistant sleeves added to piping
- Surface hardening of wear areas in various valves and equipment
 - Tungsten carbide coating, hard face welding & hard chroming
- Compensators featuring a wear resistant inner sleeve

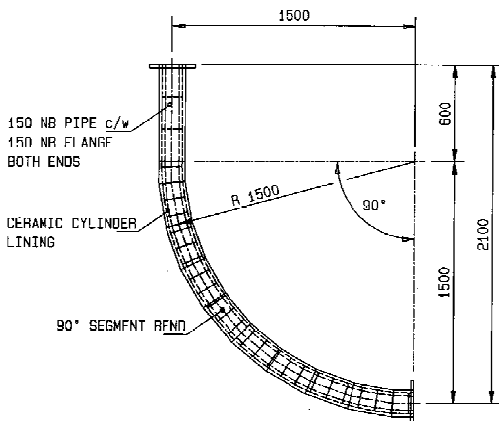
Ceramic Cylinders
prior to fitment



Ceramic lining of pipes



Typical Long Radius
Channel Back Bend



Ceramic Lined Y-piece



Typical Long Radius
Ceramic Lined Bend

Ceramic Lined Bends

